



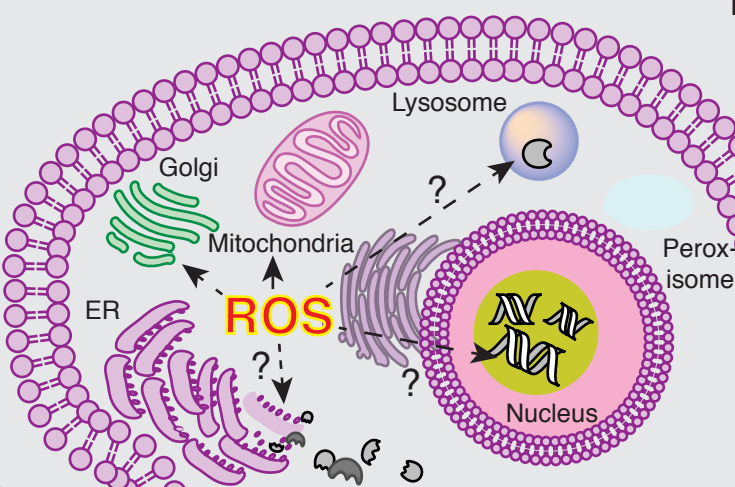
Cancer Center



barpeledlab.org

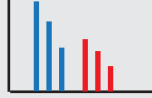


Deciphering organellar ROS in cancer

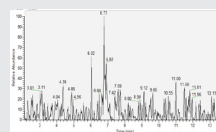


Technologies for studying organellar ROS

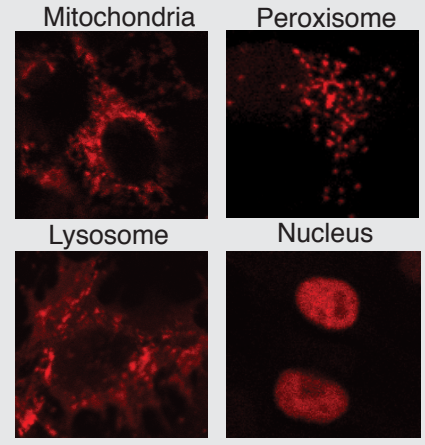
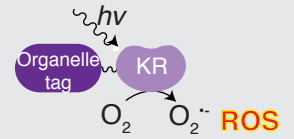
Functional organellar redox proteomics



Enrichment metabolomics

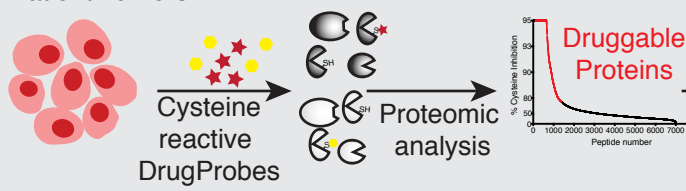


Targeted ROS generation and measurement



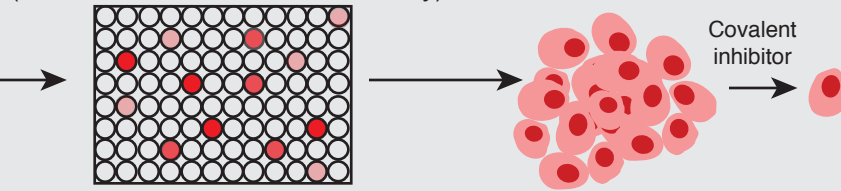
Identifying Druggable Targets in Cancer using Chemoproteomics (an 'omics' approach to drug discovery)

Cancer Cell Lines/
Patient Tumors



Cysteine Druggability Mapping (CDM)

Target-Specific Small Molecule Screen (advanced covalent inhibitors library)



Cellular Assays Protein Degradation Covalent inhibitor Biological Characterization

